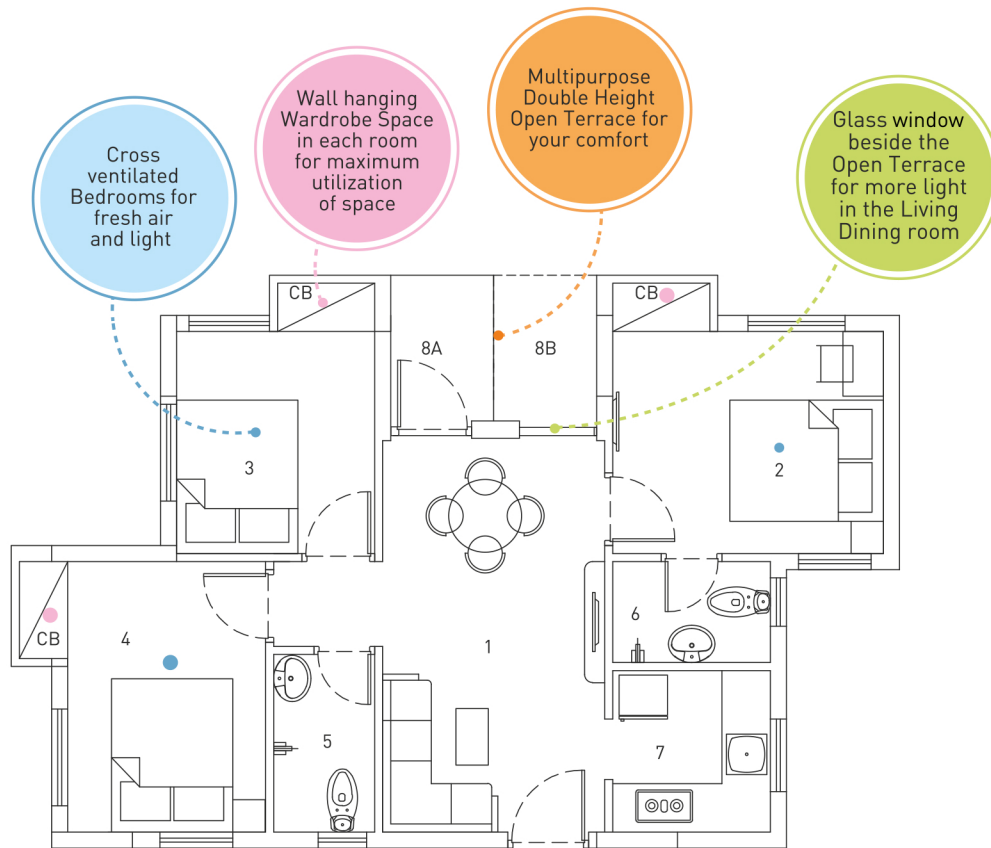


Unit Plan

FLAT D | 3B 2T

Tower G & H



Carpet area 562 sq ft
Built up area 656 sq ft
Standard built up area 910 sq ft

1	Living/Dining	9'0"x15'11"
2	Bedroom	11'0"x11'0" (11'0"x9'0" without CB)
3	Bedroom	8'0"x11'0" (8'0"x9'0" without CB)
4	Bedroom	10'0"x11'0" (8'0"x11'0" without CB)
5	Toilet	7'3"x4'1"
6	Toilet	6'5"x4'1"
7	Kitchen	6'5"x6'7"
8A*	Open terrace	4'2"x6'1"
8B*	Open terrace	4'2"x6'1"